



Capability Statement

SPECIALISTS IN CIVIL, EARTHWORKS, CONSTRUCTION, AND MINING PROJECTS ACROSS WA.

M: 0417 732 169

E: admin@equitycivil.com

**A: 8/2 Queensgate Drive,
CanningVale WA 6155**

ABN: 95 683 573 800

**Proudly Majority Aboriginal Owned & Operated
From our Perth HQ we deliver services state-wide**



TRUSTED CIVIL & INFRASTRUCTURE SOLUTIONS





Equity Civil & Drainage is an Indigenous-led company committed to delivering reliable services, competitive pricing, and exceptional workmanship.

With expertise in earthworks, drainage, pipelaying, infrastructure, mining, heavy haulage, and more, we're equipped to tackle projects of all sizes throughout Western Australia.

Beyond our core operations, we're dedicated to creating meaningful training and employment opportunities for Aboriginal people and the communities we serve.

A range of organisations seek our services, including local, state and federal government, water corporations, mining companies, land developers, remote communities, and more.



Trusted Partnerships

We build and maintain strong, mutually beneficial relationships with our clients.



Quality Solutions

We deliver high-value solutions without compromising on safety or quality.



Safety First

We prioritise the well-being of our team, clients, and communities in every project.



Community Engagement

We work with Traditional Owners, Aboriginal communities, and employment agencies to create opportunities.

Our Mission

To collaborate with trusted industry partners and deliver high-quality civil and drainage solutions while empowering Aboriginal communities through employment, training, and economic growth.

OUR KEY SERVICES

Civil & Earthworks

Wet & dry hire

Road construction

Footpaths

Bulk earthworks

Culverts

Kerbing Services

Our experienced team delivers safe and efficient civil construction services, from minor repairs to large-scale roadworks and bulk earthworks. We adapt to projects of all sizes, whether major road construction, public spaces, or sports facilities. Our kerbing services, including patching, road slashing, and street sweeping, ensure well-maintained infrastructure.

Water, Pumping & Drainage

Exploration Drilling / New Bores

Solar Pumping Systems

Bore Cleaning & Redevelopment

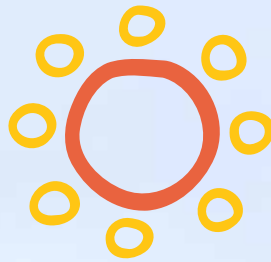
Wastewater Ponds

Stormwater / Drainage

Sewage Pipes

Our team's expertise ensures the reliable delivery of water, sewer, and drainage systems for projects of all sizes. From small repairs to pump stations and treatment plants, we manage everything, including water pressure pipelines, borefield upgrades, and sewer mains. We specialise in complex drainage systems, wastewater treatment, dam repairs, and seawall construction, offering tailored solutions.





Traffic Management

- Traffic control
- Logistics & planning
- Emergency response
- Special Events
- Major road projects
- Safety compliance

Our professional team provides 24/7 services, ensuring compliance with all regulations and best practices. From major road projects and emergency response to event traffic control and road closures, we handle it all. With fully trained and qualified personnel, we prioritise safety and professionalism to deliver effective, high-quality traffic management solutions.

Road Transport

- Specialist Fleet
- Plant Transportation
- Machinery Transport
- Equipment Hauling
- MidWest based
- WA Coverage

Equity Civil & Drainage is the ultimate choice for road transport due to our specialised fleet and extensive experience in safely transporting plant, machinery, and equipment across the Mid West and beyond. We ensure reliable, efficient, and secure transportation, offering tailored solutions for all your road transport needs.

Plant & Machinery Hire

- Dry hire & Wet hire
- Comprehensive fleet
- Experienced operators
- Maintenance & Support
- Delivery & Pickup options
- Competitive Pricing

Equity Civil & Drainage offers a wide range of plant and machinery for construction and civil works, with skilled operators available for wet hire. Our equipment is well-maintained, supported with full service, and competitively priced for flexible hire durations. We ensure reliable service with timely delivery and project efficiency.



Our ongoing partnership with **LJS EQUIPMENT** provides an extensive fleet of field equipment and access to a comprehensive array of mechanical maintenance services throughout Western Australia.



OUR LOGO

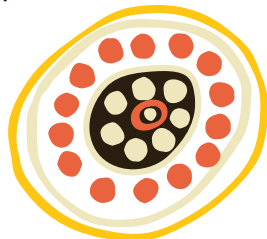
The Thorny Devil is a symbol of our deep connection to our ancestral country in the Midwest. This resilient desert creature embodies strength and endurance, while reflecting the colours and enduring spirit of the land we are proud to call home.



TRUST AND RESPECT FORGES LASTING RELATIONSHIPS.



Equity Civil & Drainage is building an inclusive and diverse workforce. This includes respecting the cultural values and traditions of the local First Nations groups of Australia. Our values are based on good working relationships with local communities; not only throughout the Mid West, but wherever our projects lead us.



We are dedicated to supporting the self-empowerment of communities, treating each project as a partnership, and delivering high-value solutions that prioritise safety. Our approach ensures that both clients and local communities benefit from every project we undertake.



For example, whenever possible, we endeavour to give back to communities by supporting local businesses and events. And we offer exceptional opportunities to individuals who can contribute to our ongoing development.

BACKED BY THE EXTENSIVE RESOURCES OF ROADLINE

To ensure delivery of comprehensive project solutions, we are proud to partner with Roadline, a well-established Kimberley-based civil contractor. With the strength of this partnership, we bring the experience and resources to confidently deliver projects of all sizes, safely, on time, and within budget. Together, we uphold shared company policies, enabling us to deliver seamless, end-to-end results.



These policies include:

Health and Safety Policy

Environmental Policy

Quality Assurance Policy

Equity is at the heart of everything we do—it drives our commitment to fairness, inclusivity, and opportunity. Through **Trusted Partnerships, Quality Solutions, Safety First, and Community Engagement**, we ensure that Aboriginal people, businesses, and communities have equal access to employment, training, and economic growth.

LEADERSHIP TEAM



Our experienced team brings the skills, qualifications, and expertise needed to manage every stage of a project, ensuring exceptional results.



Neville Mallard
Director

Neville is a descendant of the Wadjarri, Nanda people, and a member of Yamatji Southern Regional Corporation, and has extensive experience in civil construction and mining, particularly in roadworks. Starting his career with Main Roads WA, Neville has worked across various roles for many decades, including operator, director, and business owner of Neville Mallard Contracting (NMC).

He is passionate about upskilling young Aboriginal people and founded Nanda Resources to provide on-the-job training. Neville continues to work as a grader operator and is always in high demand.



Raylene Bellottie
Director

Raylene was born in Northampton, WA, raised in the Murchison region of WA and is a Nanda woman from Yamatji country, and a member of Yamatji Southern Regional Corporation. Raylene has spent 25 years in the Financial Sector building Indigenous financial inclusion. Raylene's networks in the community are extensive. She has a wealth of experience at a regional and national level in engaging and assisting Indigenous people and businesses become economically independent, as well as running her own businesses.



Mick Lang
Director

Mick has over 30 years' experience in all facets of the civil contracting industry. Starting out as a labourer, then onto a final trim grader operator and progressing through to supervisory, superintendent and over the past 11 years, project management and business management roles. He has gained leadership, strategic planning and business development capabilities over his tenure in the civil industry.

PROJECT CASE STUDIES

Here are just four of the many works completed in recent years by our key strategic partner Roadline. For a complete list of our project capabilities, get in touch.



CLIENT

Development WA

PROJECT

Waranyjarri Stage12

SCOPE

Head Contractor role, providing essential infrastructure for residential purposes. Scope included construction and installation of critical services, including bulk earthworks, road works, paving, power, communications, water mains, sewer mains, and stormwater drainage systems. Our team managed the dual challenges of resourcing sub-contracted trades and dealing with inclement weather.



CLIENT

Shire of Broome

PROJECT

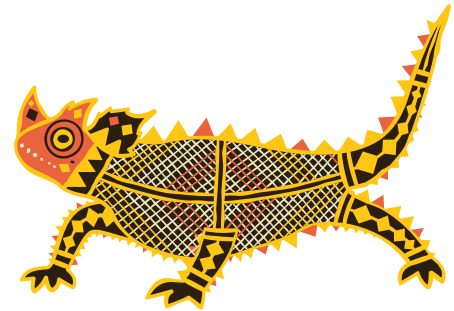
Town Beach Precinct

SCOPE

Head Contractor role in charge of construction of the award winning Playspace at Broome Town Beach. Careful management ensured continued public access to key facilities and safety of the public. Included earthworks and landscaping, footpaths, scooter track and footbridge, installation of electrical systems and conduits, installation of new reticulation system, connection of existing amphitheatre, and creation and installation of custom playground elements. Completed with zero safety incidents. Winner of National Parks & Leisure Award - Contract Value: \$4,153,918.28.



PROJECT CASE STUDIES



CLIENT

Shire of Broome

PROJECT

Hunter Street Reconstruction
– Stages 1 & 2

SCOPE

Head Contractor responsible for reconstruction of existing 800m road including drainage and crossovers. Located in a busy area, the road remained open during the works. We minimised disruption and provided a safe environment for the public and our crew. As a Tier 1A approved contractor for the Water Corp, Roadline arranged for water services to be below the road pavement. We also saved Broome Shire significant time by dealing directly with the Water Corporation. Practical completion achieved with zero safety incidents. Contract Value: \$811,249



CLIENT

Shire of Broome

PROJECT

Upgrade Napier-Hammersley St
Intersection

SCOPE

Head Contractor responsible for construction of new roundabout at intersection of major road leading to Broome's CBD. Complex stormwater drainage work was installed. We established clear lines of communication with local businesses, preparing for disruption to normal traffic flow. Our work program and Traffic Management Plan provided a safe work environment to the public and construction crew. Zero safety incidents and all major construction work completed. Contract Value: \$1,813,926

CONTACT US



E: raylene@equitycivil.com

M: 0417 732 169

E: neville@equitycivil.com

M: 0437 203 684

A: 8/2 Queensgate Drive,
Canning Vale WA 6155

Learn more at:

www.equitycivil.com

*Backed by the expertise
& resources of Roadline:*
www.roadlinecivil.com

